



GAT MONTHLY MEMBERSHIP PROGRESS REPORT

Results as of: 6/30/2023

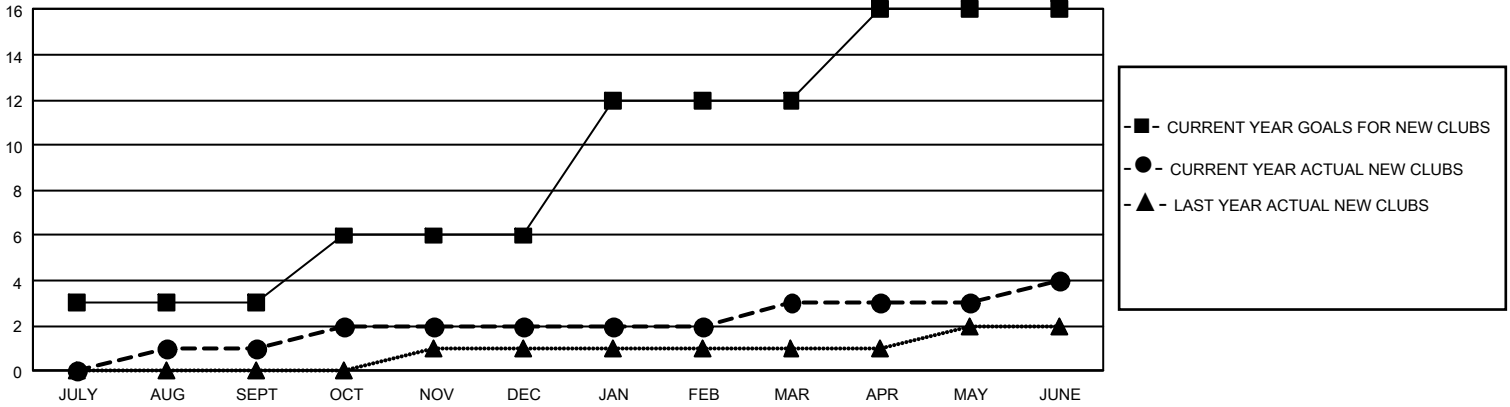
GMT Constitutional Area 1, Group K

REPORT DOES NOT INCLUDE CLUBS IN UNDISTRICTED AREAS.

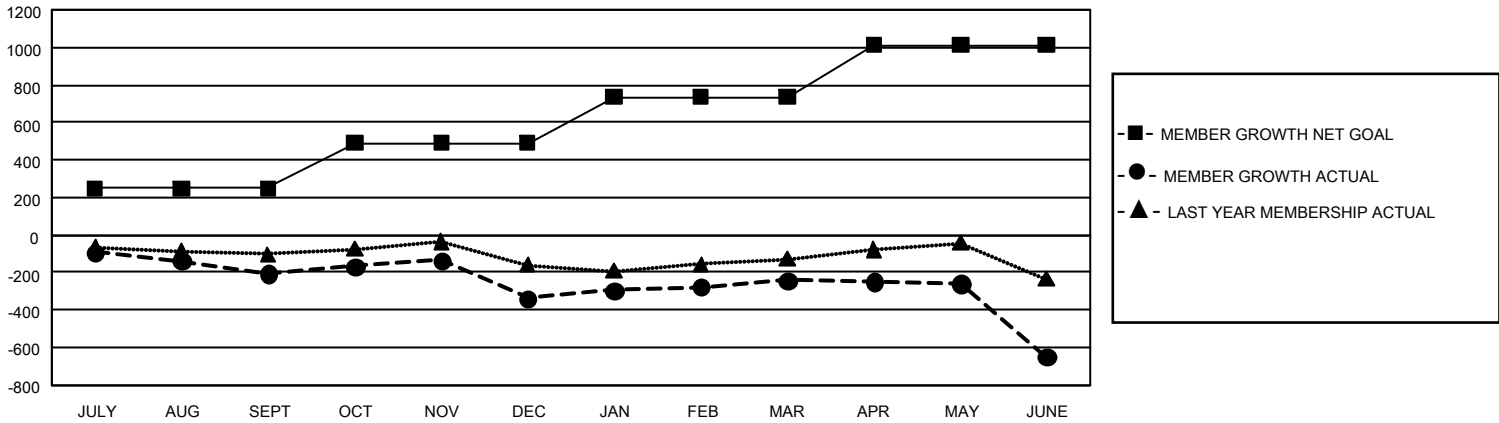
Clubs			
RESULTS FOR 2022-2023			
QUARTER	NEW CLUB GOAL	NEW CLUBS	DROPPED CLUBS
JULY/AUG/SEPT	9	1	0
OCT/NOV/DEC	9	1	4
JAN/FEB/MAR	18	1	2
APR/MAY/JUNE	12	1	6

Members			
RESULTS FOR 2022-2023			
QUARTER	MEMBER GROWTH NET GOAL	MEMBER GROWTH ACTUAL	DROPPED MEMBERS ACTUAL (including transfers)
JULY/AUG/SEPT	247	276	444
OCT/NOV/DEC	244	519	594
JAN/FEB/MAR	245	451	313
APR/MAY/JUNE	277	562	899

GOALS AND ACTUAL NEW CLUBS CUMULATIVE



GOALS AND ACTUAL MEMBERS CUMULATIVE



DROPPED CLUBS: 12	371 CLUBS OF 584 ADDED 1 OR MORE NEW MEMBERS	<u>GENDER DISTRIBUTION</u>	
<u>DROPPED MEMBERS</u>		MALE	10,301 (61.34%)
DECEASED	287	FEMALE	6,491 (38.65%)
CLUB CANCELLED	116	NON BINARY	0 (0.00%)
OTHER	1,846	PREFER NOT TO ANSWER	2 (0.01%)
TOTAL	2,249	TOTAL FAMILY UNIT MEMBERS	3,421
	CLICK HERE FOR CUMULATIVE MEMBERSHIP DATA	FAMILY MEMBERS PAYING HALF DUES	1,766